

Expressions: Duet Parts

from Musical Jungle Gym

Kevin McKee

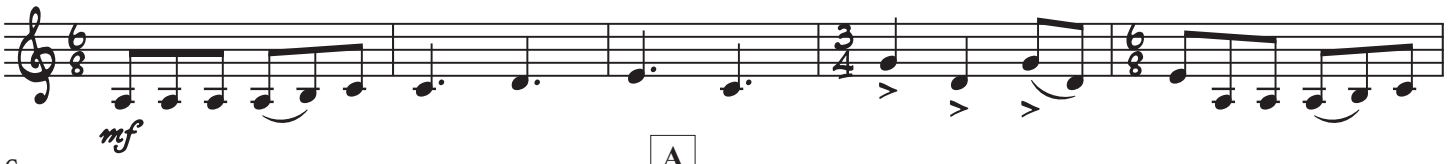
pg. 8

Leggiero



pg. 8

Con Brio



pg. 26

Swing



pg. 20

Timido

The musical score for 'Timido' is written on two staves in treble clef, 6/8 time, with a key signature of three flats (B-flat, E-flat, A-flat). The first staff begins with a *ppppp* dynamic marking and ends with a *sfz* marking and a fermata. The second staff begins with a *ppppp* dynamic marking, includes a *molto rit.* instruction, and ends with a *fffff* dynamic marking and a fermata. The piece concludes with a double bar line and repeat signs. There are two first endings marked with '2' above the notes.